

# GEO compressor

## GEOcompressor: A tool to write ECW or JPEG 2000

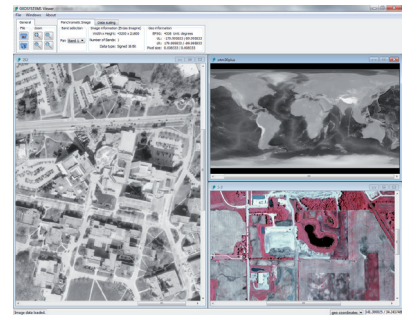
Do you need to compress your image data into ECW or JPEG 2000?

**GEOcompressor** is an easy to use, stand-alone tool at a very affordable price!

**GEOcompressor** compresses image data files of unlimited size within seconds into tiny ECW or JPEG 2000 data.

**GEOcompressor** maintains all geo-information, supports batch mode and alpha channel transparency. Boasts an easy to use yet sophisticated user interface.

**GEOcompressor** is based on the ERDAS® ECW/JP2 SDK 4.2 and has been developed by GEOSYSTEMS GmbH in Germany.



### Features

#### High speed compression

- Converts raster data to ECW and JPEG 2000 as fast as up to 1 GB per minute.
- Writes ECW (8-bit) and JPEG 2000 (8-/16-bit).
- Supports the latest ECW format including the spatial reference system.
- Alpha channel transparency is supported for both ECW and JPEG 2000.
- Image data in TIFF + world file are compressed to GeoJPEG 2000 or ECW including the complete projection information.

#### Flexible handling

- Supports any kind of raster format as input (TIFF, NITF, JPG, PNG, IMG, GIF, BMP, ECW, JPEG 2000 and many more).
- Virtually unlimited file size. Accepts more than 65,500 image layers (bands), and has a theoretical file size limit of  $2^{64}$ , far exceeding the 16 TB file size allowed by Microsoft NTFS (ECW and JPEG 2000).
- Data input can be selected from multiple sources: single files, multiple files or complete directories as well as via CSV file.

- Provides versatile batch mode allowing the compression of hundreds of images (e.g. all files within one directory) with only one command.
- GUI can be localized. Current version supports English and German.
- Stand-alone tool based on the ERDAS ECW/JP2 SDK 4.2.

#### Easy to use stand-alone tool

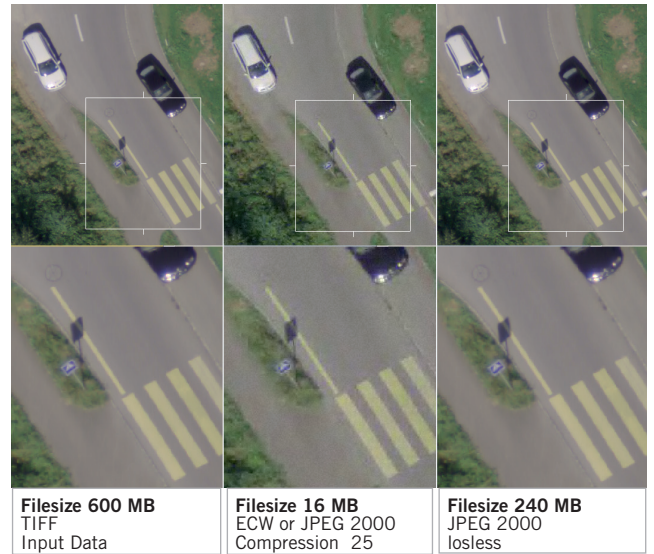
- Simple yet sophisticated graphical user interface with optional extended settings including batch mode.
- Features a fast image viewer for raster images and data streams (ECWP) including zooming/roaming/panning, data scaling, band selection and display of image and projection information.
- Node-locked local license with hassle free licensing mechanism.
- Runs on all Windows operating systems (including 64-bit).



## Why ECW?

Enhanced compression wavelet (ECW) is a high-performance compressed file format designed specifically for geospatial imagery. When compared to other image compression formats, Intergraph-ERDAS' patented ECW technology provides the industry's fastest decompression and compression rates possible. Remarkably, this is done without placing a heavy load on computer memory and processors, while also maintaining high compression ratios and visually lossless image quality.

ECW has become the de facto industry standard for rapidly handling large geospatial imagery.



Only at high compression rates (middle) and even so only at the enlargement (middle below) some image noise is noticeable.

Features	Benefits
ECW can compress imagery to 5-10 % of the original size, while remaining visually lossless.	Reduce images to manageable size.
64-bit file support handles large images.	Compress images with unlimited file size.
Widely used by GIS, CAD, and imaging applications.	Easily exchange images.
Fast viewing at any resolution for any region.	Fast zooming and panning over large images.
Low memory footprint.	Applications run faster; inexpensive hardware is needed.
Geolocation data preserved as embedded meta-data (ISO's standard GML for JPEG 2000).	Correctly locate images.
Opacity channel support.	Mask out background and null data areas.
Multiresolution detail built into ECW.	Eliminates the need for tile caches, pyramids and overviews.

## Price and Licencing

- **GEOcompressor** software download from [www.geocompressor.com](http://www.geocompressor.com).
- FREE trial version (limited to 30 days of usage and 5 megapixel input file size).
- For a full version we provide a license key.  
Price for a single local (node-locked) license of **GEOcompressor**: EUR 895,- + VAT.  
On request we provide a version including mosaic function for EUR 1.350,. + VAT.

## Contact



GEOSYSTEMS GmbH  
Riesstraße 10, 82110 Germering, GERMANY  
T: +49 - (0)89 - 894343 0, F: +49 - (0)89 - 894343 99  
E: [info@geosystems.de](mailto:info@geosystems.de), [www.geosystems.de](http://www.geosystems.de), [www.geocompressor.com](http://www.geocompressor.com)